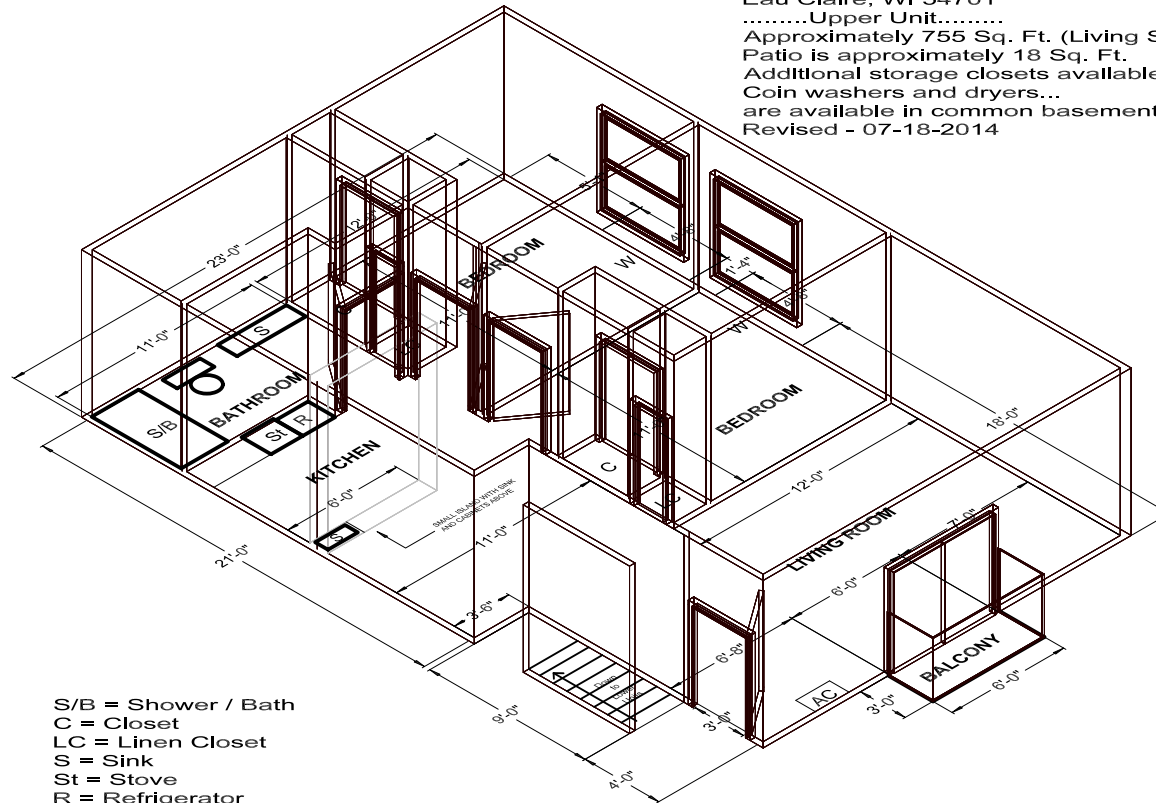


Thomas Drive 2703, Apt. 12  
 Eau Claire, WI 54701  
 .....Upper Unit.....  
 Approximately 755 Sq. Ft. (Living Space)  
 Patio is approximately 18 Sq. Ft.  
 Additional storage closets available  
 Coin washers and dryers...  
 are available in common basement  
 Revised - 07-18-2014



S/B = Shower / Bath  
 C = Closet  
 LC = Linen Closet  
 S = Sink  
 St = Stove  
 R = Refrigerator  
 AC = Air Conditioning  
 W = Window