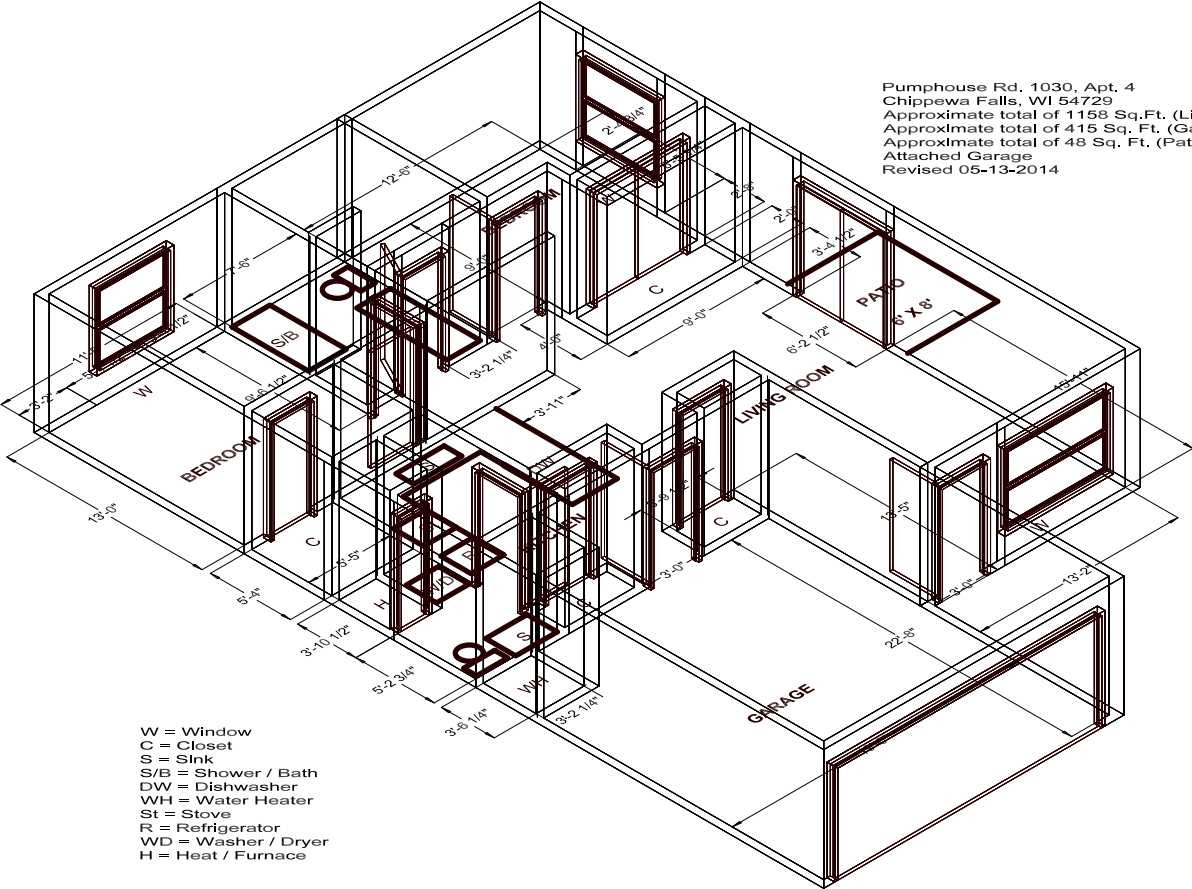


Pumphouse Rd, 1030, Apt. 4
 Chippewa Falls, WI 54729
 Approximate total of 1158 Sq.Ft. (Living Area)
 Approximate total of 415 Sq. Ft. (Garage)
 Approximate total of 48 Sq. Ft. (Patlo - Cement Slab)
 Attached Garage
 Revised 05-13-2014



W = Window
 C = Closet
 S = Sink
 S/B = Shower / Bath
 DW = Dishwasher
 WH = Water Heater
 St = Stove
 R = Refrigerator
 WD = Washer / Dryer
 H = Heat / Furnace